

Ground Floor Westella, 181 Elizabeth Street / GPO Box 1707, Hobart Tasmania 7001, Australia
Phone +61 3 6231 6399 Fax +61 3 6231 6328 Email modulo@modulo.com.au Web www.modulo.com.au ABN 12 067 591 922

OCR PAC Version 6.0

Automated Transaction Data Entry for Sage ACCPAC ERP

NOBODY LIKES DATA ENTRY!

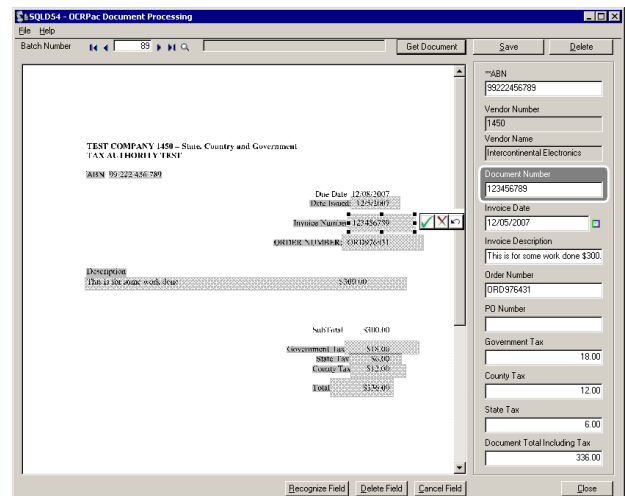
- Data entry is a chore. It's necessary, but it's costly and time consuming.
- Why can't ACCPAC just read and enter the data from vendor invoices for you?
- What if you could consistently process vendor invoices in under 20 seconds ?
- OCRPAC will help you do this.
- What if the invoice was automatically stored with your ACCPAC data so you could view it from ACCPAC any time you needed to?
- The OCRPAC / eImagePac bundle makes this a reality.

OCR PAC WILL HELP IF YOU:

- Have better things to do than data entry
- Process Accounts Payable invoices
- Need to store documents electronically
- Have high volumes or time constraints
- Want to capture invoices quickly and accurately

FEATURES

- OCRPAC automates data entry for Sage Accpac ERP Accounts Payable Invoices
- Processes invoice documents from an inbox folder or direct from any Twain compliant scanner
- Available bundled with Modulo Software's eImagePac for a total document management solution.
- OCRPAC is a tightly integrated ACCPAC third party solution developed with the ACCPAC Software Development Kit (SDK)
- Supports operation in the ACCPAC Windows and Portal desktops and is available for all Sage ACCPAC ERP editions and databases.



- Enhances existing ACCPAC transaction windows which simplifies and streamlines user acceptance and training.
- OCRPAC supports the popular file format(s) that your organisation prefers – see below.
- Different documents can be processed with different file types and resolutions, even for invoices from the same Vendor.
- Uses standard ACCPAC security settings. ACCPAC users are assigned OCRPAC privileges to allow them to process documents, print reports etc.

TECHNICAL SPECIFICATIONS

Requirements:

- Sage ACCPAC ERP 6.0 with the following modules: System Manager and Accounts Payable using one of the following databases:
Pervasive.SQL
Microsoft SQL Server
Oracle
- Microsoft Windows XP or above

Supported file formats:

- GIF, JPEG, TIFF, PNG, BMP, FAX, AWD, STF, EPS and PDF